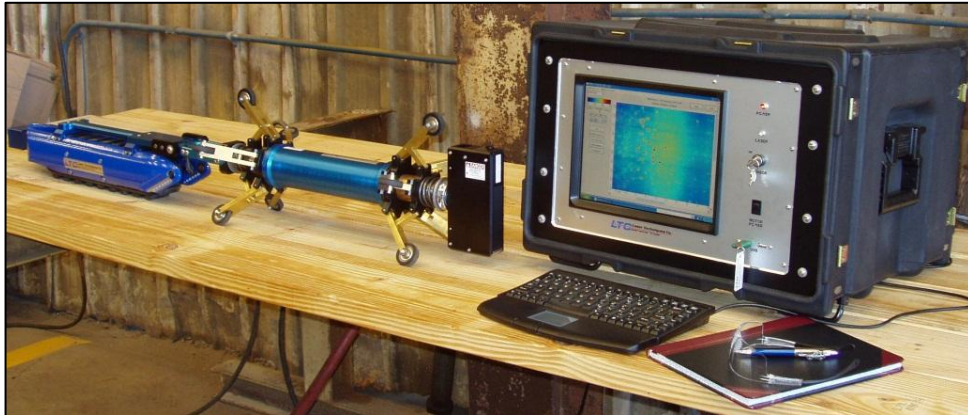


## Bemis™ Pipe Inspection Systems

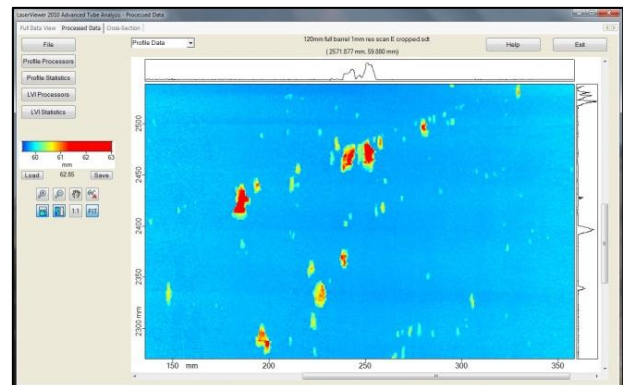
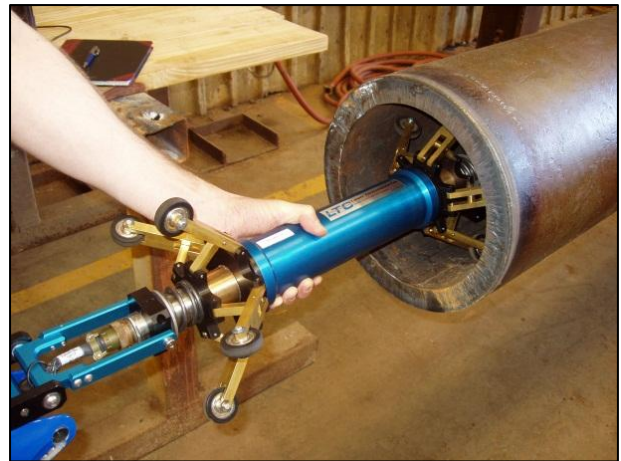


### Advanced Laser Inspection Technology

The *Bemis™ Pipe Inspection System* is a high-performance laser-based tool capable of rapidly, accurately and *quantitatively* mapping the internal surface of small and medium diameter pipes. Its flexible and user-friendly control and analysis software provides a wide variety of options for motion control, data acquisition, analysis and display.

### Features

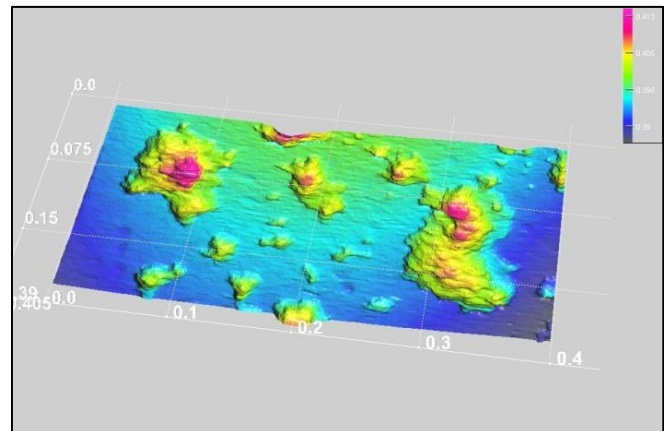
- **Rugged and portable design** for use in the field or shop
- **High Resolution** laser-based system for assessment of pipe ID bore condition
- **3D Precision** mapping of pitting and erosion profiling
- **Operator-Friendly** motion and scan control
- **Quick setup** with automatic calibration
- **Easily adaptable** to a variety of pipe sizes
- **LaserVideo™** provides visual image of internal features
- **Accurate and Quantitative** data for unparalleled measurement of pitting and erosion
- **Optional advanced analysis and reporting software** for in-depth processing of test results
- **Optional automatic report generator** software for rapid summarization of large data sets





### Basic Specifications:

- **Axial scan resolution: up to 0.1 mm (0.004 inch) per increment**
- **Rotary scan resolution: up to 0.1 mm (0.004 inch) per increment**
- **Sensor resolution: 5 microns (.00025 inch)**
- **Sensor Linearity: 15 microns (.0006 inch)**
- **Laser Spot Size (max): 0.05 mm (0.002 inch)**
- **Laser Power Classification: Class II**
- **Power: 110/240 VAC – 50/60 Hz**
- **Test Results Displayed: Contour view and cross sectional**
- **Tabular summary reports available**
- **Standard scan lengths up to 15 meters**



Laser Techniques Company, LLC  
6742 185<sup>th</sup> Ave NE – Suite 300.  
Redmond, WA 98052  
USA

Phone: (425) 885-0607  
e-mail: [information@laser-ndt.com](mailto:information@laser-ndt.com)  
web site: [www.laser-ndt.com](http://www.laser-ndt.com)