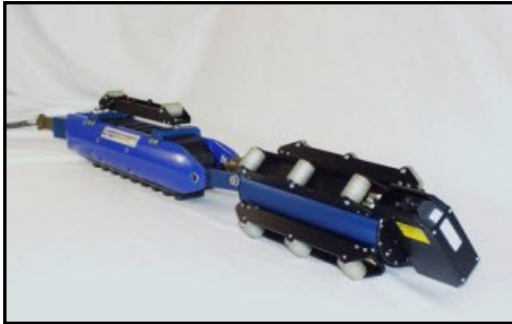


BEMIS™ Features



155mm Self-Propelled Scanning Assembly

Portable Design for the field or shop

High Resolution laser-based system for assessment of weapon bores

3D Precision bore erosion profiling and laser-based dimensional measurement

Quantitative data for unparalleled gun tube surface and erosion analysis

High Resolution LaserVideo™ visual image of gun tube surfaces

Advanced analysis and reporting software provides summary data in hard copy or soft-copy for export

Automatic report generator software provides tabular summary of test results

Operator-Configurable motion and scan control

Quick setup with automatic calibration

Supports 5.56mm to 155mm weapons

Bore Straightness and alignment optional

On-Site services and training available

BEMIS™ Basic Specifications:

Axial scan resolution: Up to 0.1 mm (0.004 inch) per increment

Rotary scan resolution: Up to 0.1 mm (0.004 inch) per increment

Sensor resolution: 5 microns (.00025 inch)

Sensor Linearity: 12 microns (.0005 inch)

Laser Power: < 4 mW

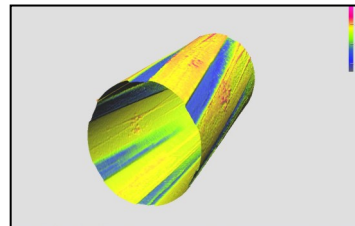
Laser Spot Size (max): 0.05 mm (0.002 inch)

Laser Power Classification: Class II

Power: 110/240 VAC – 50/60 Hz

Test Results Displayed: Contour view and cross sectional

Surface contour display with 256 color, grey-scale, thermal and solid color options



LaserViewer™ 3D image (5.56mm)

LTC Laser Techniques Co.
Quality Control and NDT Systems

6742 185th Ave NE, Suite 300
Redmond, WA 98052
www.Laser-NDT.com

Phone: 425-885-0607
Fax: 425-885-0802
E-mail: information@laser-ndt.com



LTC Laser Techniques Co.
Quality Control and NDT Systems

BEMIS™

Bore Erosion Measurement Inspection System

**Laser-Based Gun Bore
Inspection System for
5.56mm–155mm Weapons**



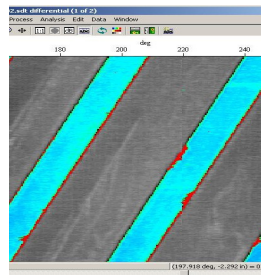
LTC...Making Heroes



BEMIS™ Laser-based Gun Bore Erosion Measurement Inspection System

Leading-edge laser-based gun bore inspection technology

Laser Techniques Company, LLC (LTC) specializes in the development of automated, high-resolution laser-based sensors and systems for a wide variety of NDT and Quality Control applications. LTC sensors are used to detect and measure difficult-to-inspect features such as erosion, corrosion or deformation in tubes and bores.



Laser Profilometry display of gun bore

The **BEMIS™** system is a high-performance laser-based inspection system capable of rapidly, accurately and quantitatively mapping component



BEMIS-LC™ 155mm Scanning Gun Bore

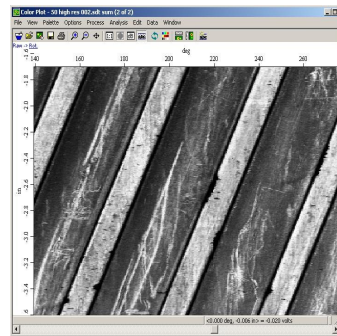
surfaces. The BEMIS™ sensor operates like a non-contact “laser caliper”, rapidly

scanning a tiny laser beam over the surface. This eliminates operator subjectivity and human error by scanning up to 100% of the surface, providing quantitative results used to confirm, document and monitor the integrity of gun bores and other parts.



BEMIS-MC™ 35mm medium caliber inspection system

LaserVideo™ eliminates need for borescopes



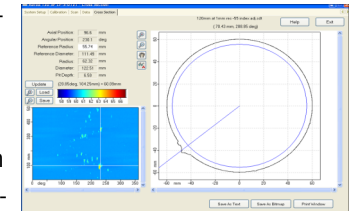
LaserVideo™ provides a camera-like image without distortion

images of the bore surface. The Laser Video™ image resembles a conventional CCD camera image – but without the distortion caused by right-angle mirrors.

A unique feature of the BEMIS™ system is Laser Video™ image display. This allows the operator to view high-resolution, laser-generated

High Resolution Data

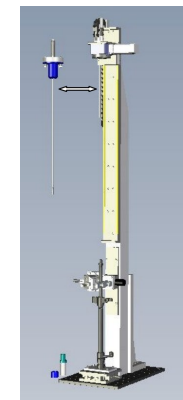
The BEMIS™ system is capable of detecting and mapping flaws or dimensional variations such as pits, corrosion, and erosion with typical accuracies of better than ± 0.001 inch (0.025 mm). Test results can be viewed in several user-friendly graphic or tabular summary formats.



LaserViewer™ Display

Modular / Flexible / Expandable

The Laser MicroMap™ system employs a modular design with easy expandability. The LP-4210™ data acquisition unit can interface with a wide range of probe delivery systems from 5.56mm to 155mm.



BEMIS-SC™ Small-caliber scanning station supports multiple small caliber sensors

Laser Techniques Company, LLC

6742 185th Ave NE, Suite 300

Redmond, WA 98052

www.Laser-NDT.com

Phone: 425-885-0607

Fax: 425-885-0802

E-mail: information@laser-ndt.com