

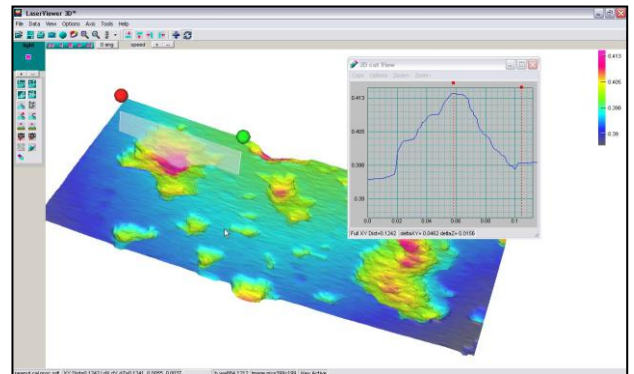
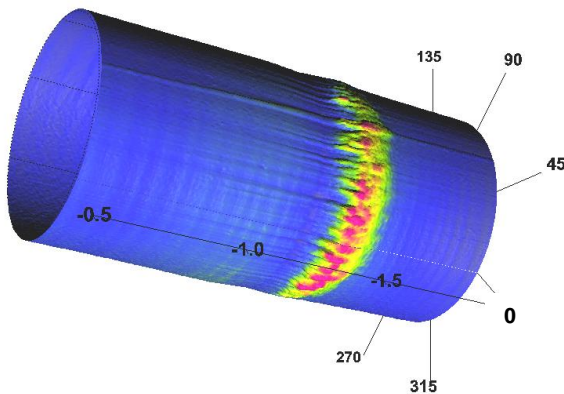
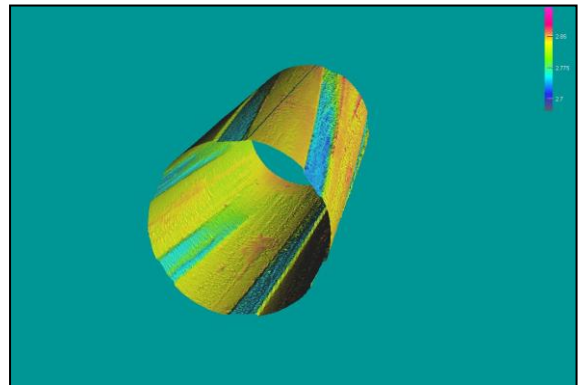
LaserViewer 3D™

Visualization and Analysis Software

LaserViewer 3D™ is an add-on software package that allows operators to more fully visualize and analyze complex three-dimensional data sets.

Features

- Zoom, tilt, pan
- Adjustable lighting and shading
- Local feature measurement
- Display in flat or cylindrical perspective
- Real-time data rotation about axis
- Video clip capture for presentations
- Multiple color palette display options
- Compatible with *Laser MicroMap™* data
- Ideal for analysis of complex 3D profilometry data



Contact our authorized sales representative to learn more about *LaserViewer 3D™*